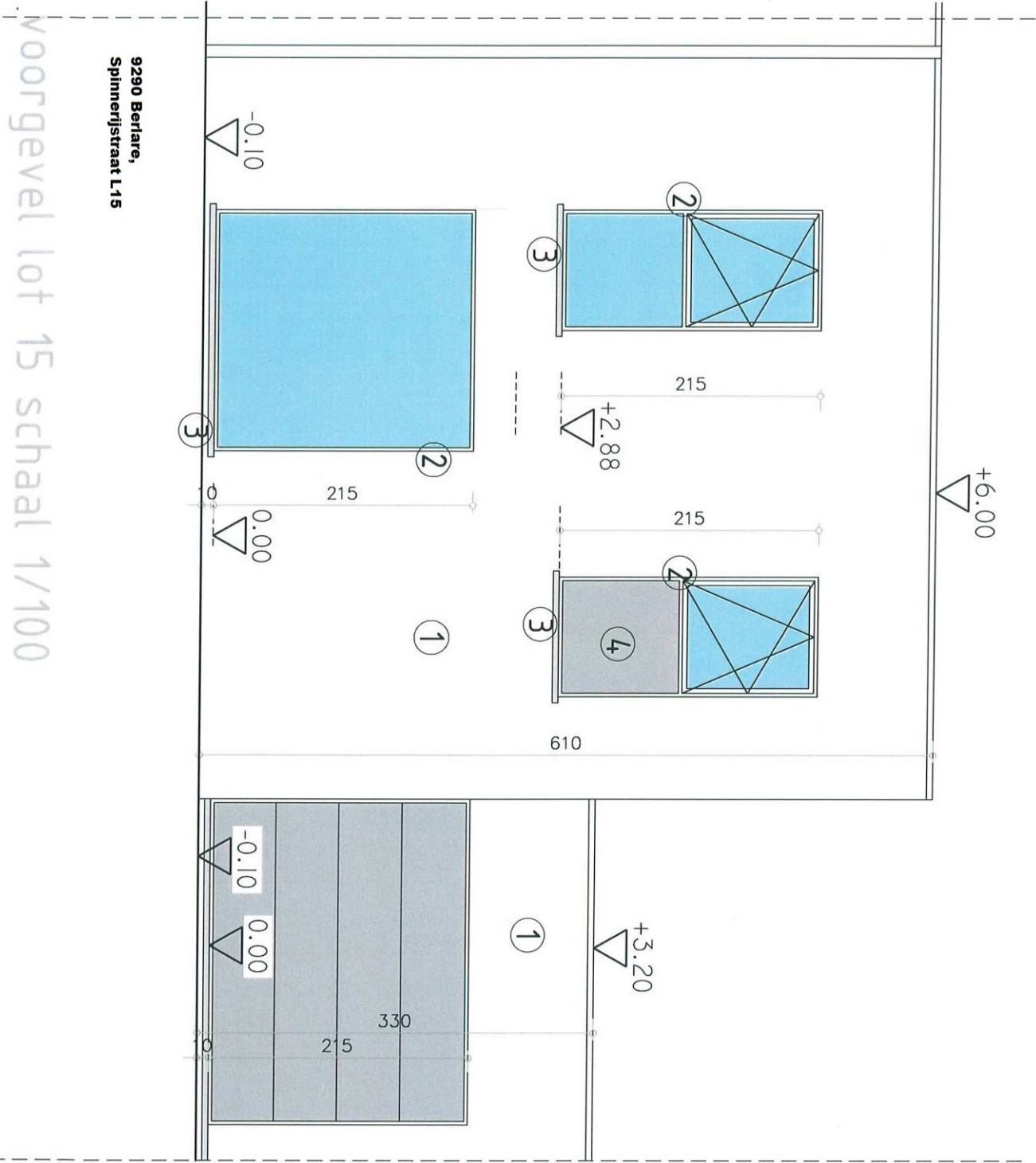
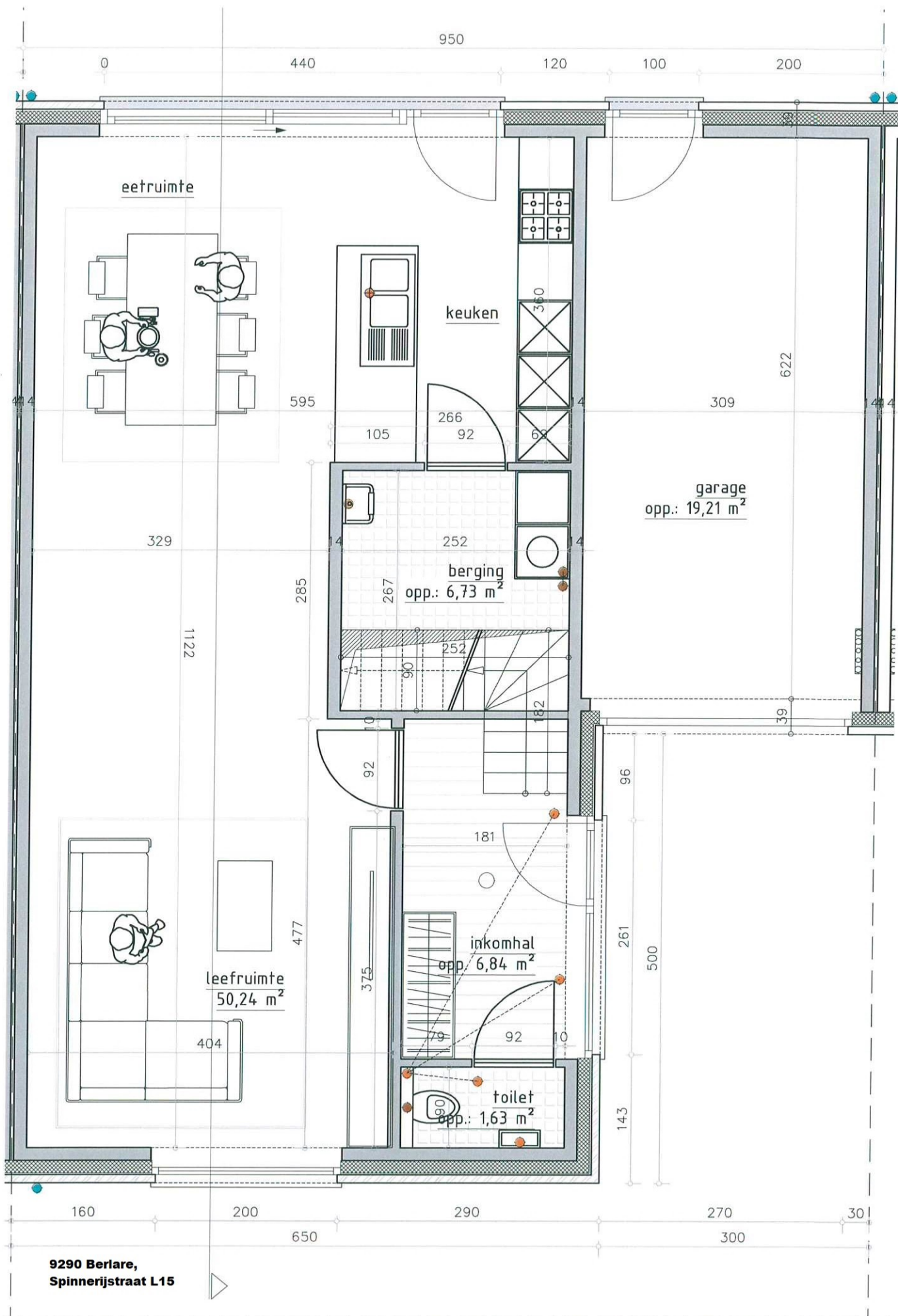


9290 Berlare,  
 Spinnerijstraat L15

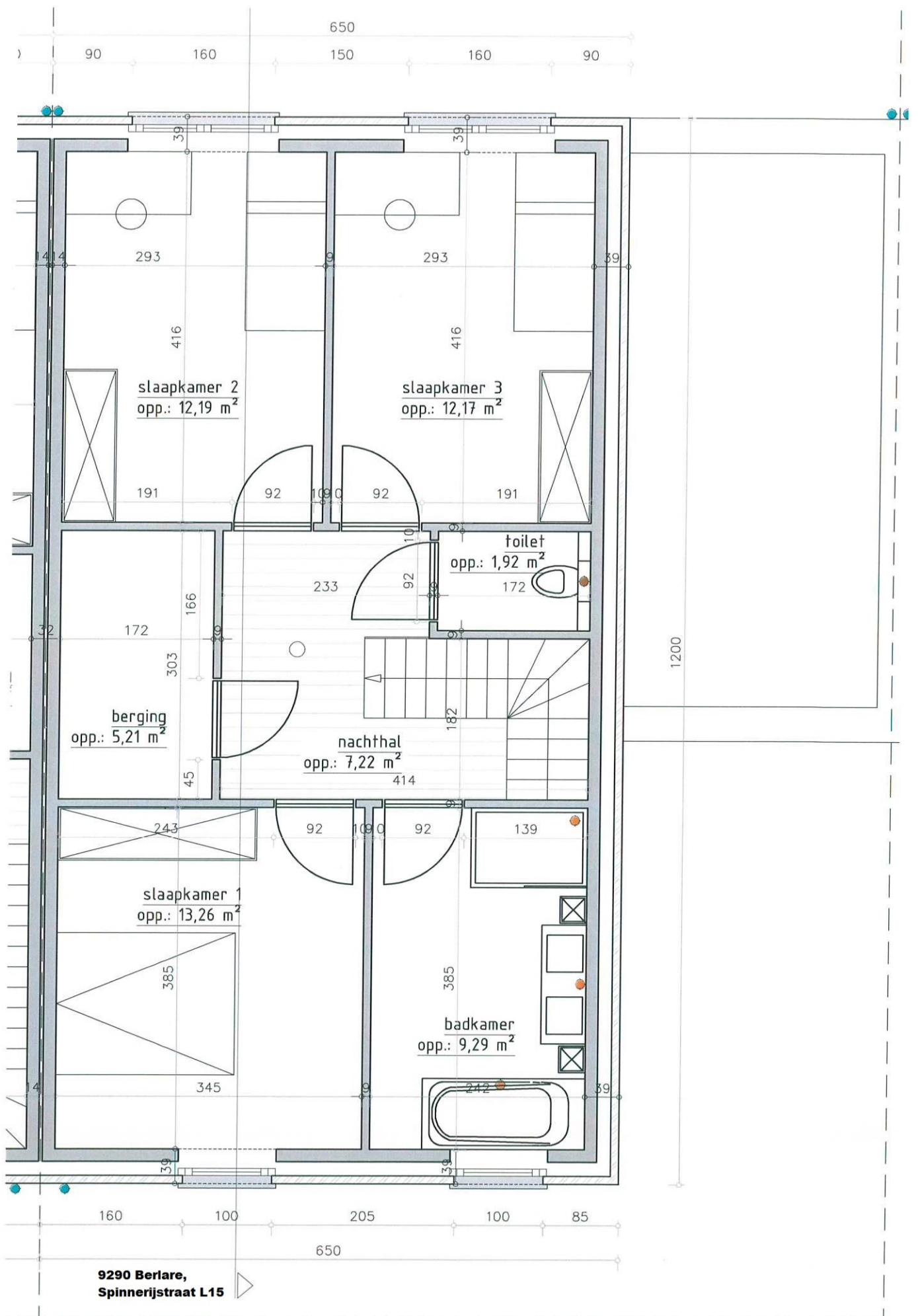


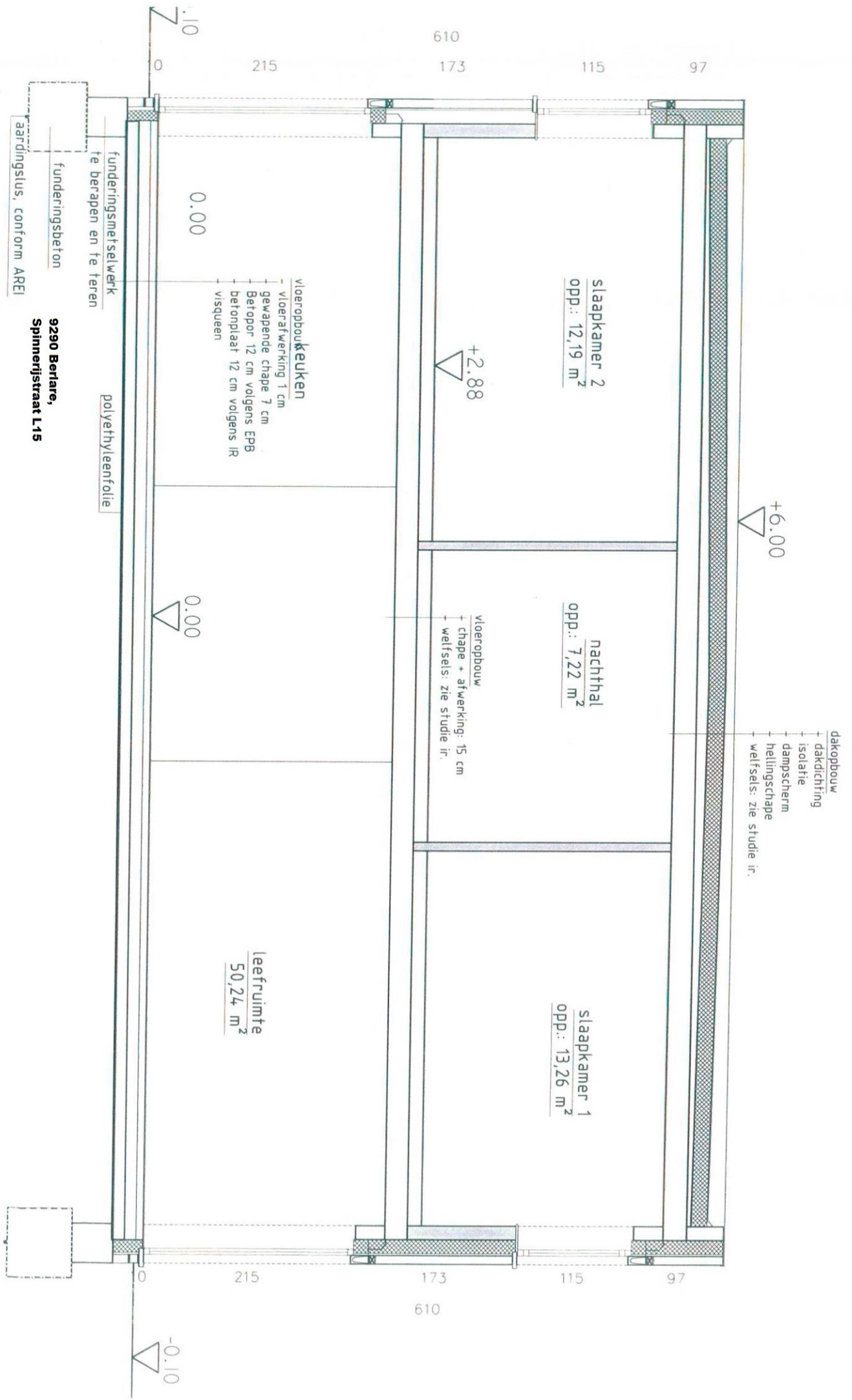
9290 Berlare,  
Spinnerijstraat L.15

voorgevel lot 15 schaal 1/100









- + dakopbouw
- + dakdichting
- + isolatie
- + dampscherm
- + hellingschape
- + welfsels: zie studie ir.

slaapkamer 2  
opp.: 12,19 m<sup>2</sup>

nachthal  
opp.: 7,22 m<sup>2</sup>

slaapkamer 1  
opp.: 13,26 m<sup>2</sup>

leefruimte  
50,24 m<sup>2</sup>

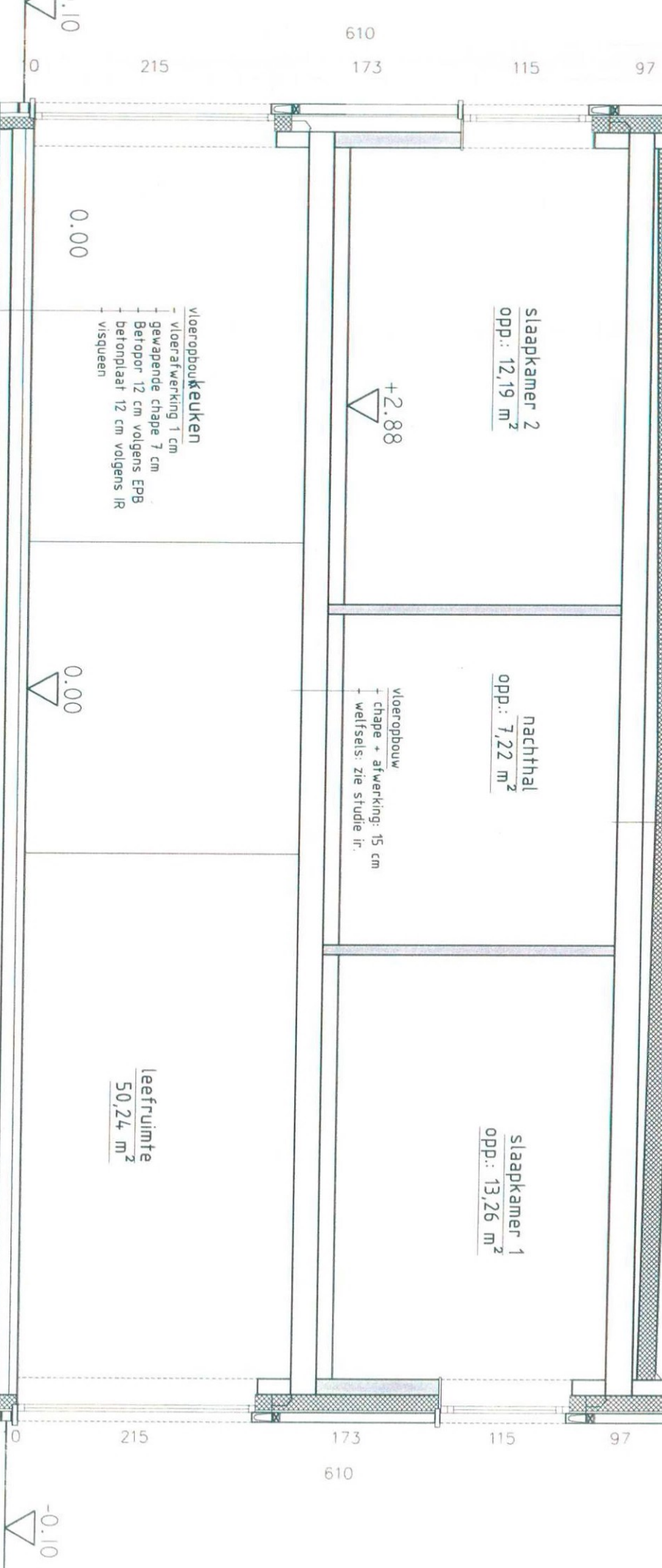
- vloeropbouwkeuken**
- + vloerafwerking 1 cm
  - + gewapende chape 7 cm
  - + Betopor 12 cm volgens EPB
  - + betonplaat 12 cm volgens IR
  - + visqueen

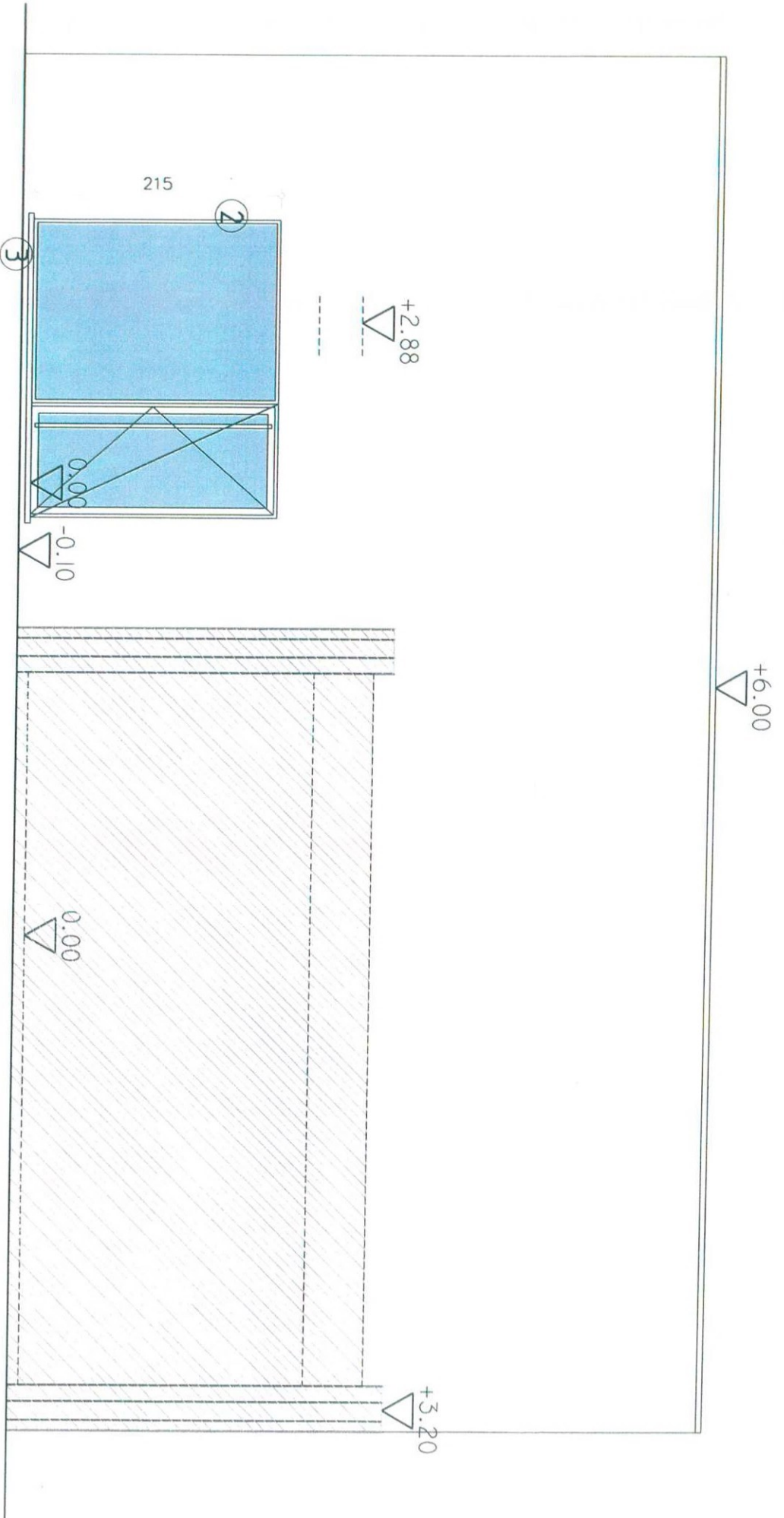
- vloeropbouw**
- + chape + afwerking: 15 cm
  - + welfsels: zie studie ir.

- funderingsmetselwerk
- te berapen en te teren
- funderingsbeton
- aardingslus, conform AREI

polyethyleenfolie

**9290 Berlare,  
Spinnerijstraat L15**





9290 Bertare,  
Spinnerijstraat L15

+6.00

+3.20

100 115

+2.88

100 115

0.00 -0.10

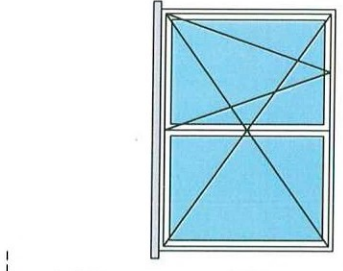
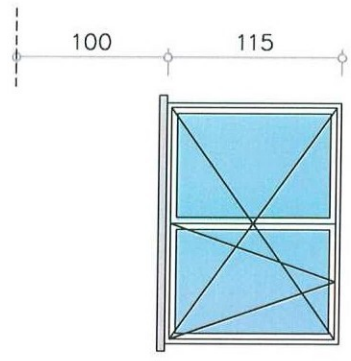
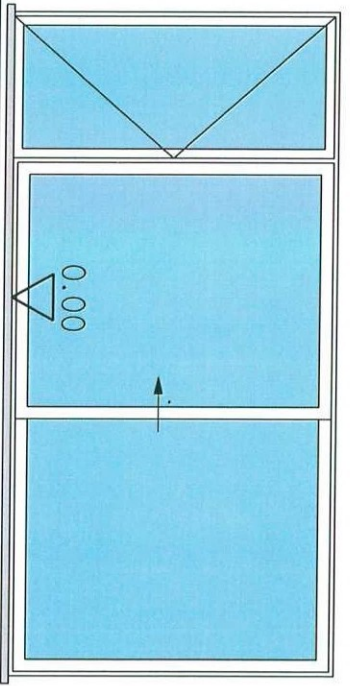
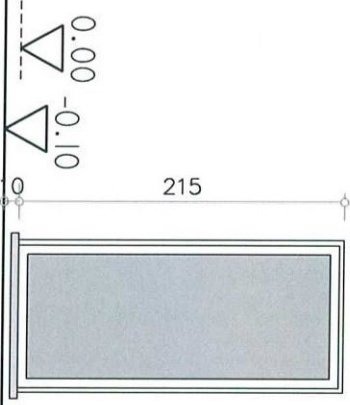
215

0.00

0 215

9290 Beclare,  
Spinnerijstraat L15

achtergevel lot 15 schaal 1/100

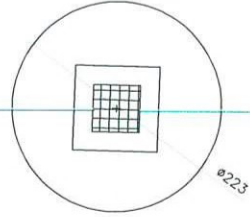




228 m<sup>2</sup>

foestellen op regenwater:  
\* uitgielbak  
\* toilet verdieping  
\* wasmachine

rw-put 5000 l  
+ tzk 50x50



infilo  
1250 l  
4,5 m<sup>2</sup>

sifonput



950

